

Horizontal Mount Side Lights

LED 2-mile (USCG 2nm) Certified - Patent #D665,113S
 Use on Power Driven Vessels Under 20m (65.6 ft.) in Length

Material: Stainless Steel
 Finish: Polished, Black, or White Powder Coated
 Dimensions: Length: 2-1/2", Width: 2-5/8", Height: 5/8"
 Screw Size: #8
 Voltage: 12V LED
 Wattage: 3.75 watts (each light)
 Amperage: <0.25 amps (each light)
 Features: Ultra Low Profile, Low Heat, Long Life



STEALTH II Series
 Fig. 0616 Stainless



White

Black



Finish	Retail Pkg.*	OEM Bulk Pkg.*
Polished SS	0616DP2STS	0616000STS
Black	0616DP2BLK	0616000BLK
White	0616DP2WHT	0616000WHT

*Sold in pairs.

Spare gasket kit required for mounting on metallic surfaces (optional for fiberglass surfaces and included in DP package): 0616000GKT

2 Navigation Lights

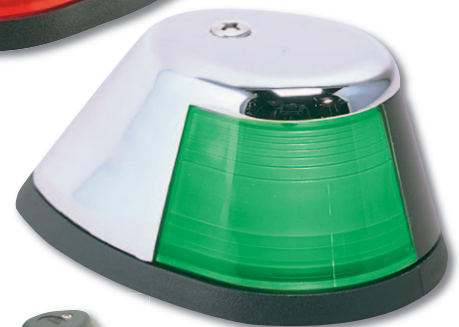
2-mile (USCG 2nm) Certified

Use on Power Driven Vessels Under 20m (65.6 ft.) in Length

Material: Bronze Top with Polymer Base or All Polymer
 Finish: Chrome Plated, Black, or White
 Dimensions: Length: 3-1/2", Width: 2-1/4", Height: 1-5/8"
 Screw Size: #8
 Contacts: Gold Plated
 Voltage: 12V (Bulb Included)
 Wattage: 10 watts (each light)
 Amperage: .80 amps (each light)



Fig. 0253
 Chrome



White

Black



Finish	Retail Pkg.*	OEM Bulk Pkg.*
Chrome	0253M00DP1	0253M0012V
Black	0253B00DP1	0253B0012V
White	0253W00DP1	0253W0012V

*Sold in pairs.



Note: Fig. 0253 can also be used as 24-volt A.B.Y.C. A-16 certified lights on boats built prior to 11/1/03. Replace the bulbs provided with Cat. No. 0072DP1CLR 24-volt bulbs. Contact us for 24-volt applications on new construction.

Spare Parts Information

Fig. 0253:
 Green Lens: 0273DPGLNS.
 Red Lens: 0273DPRLNS.
 Bulbs: 0071DP0CLR.
 Base w/Socket Assy: 0114000BLK/WHT.



Fig. 0273



Fig. 0071DP0CLR

Fig. 0616:

L.E.D.'s have no user serviceable parts